

Mariners' Memorial Service salutes those who risked lives on the lake

By Rick Fralick
Gazette Staff

One of Prince Edward County's oldest traditions will be maintained next month with the holding of the annual Mariners' Memorial Service at South Bay United Church, next to Mariners' Park Museum.

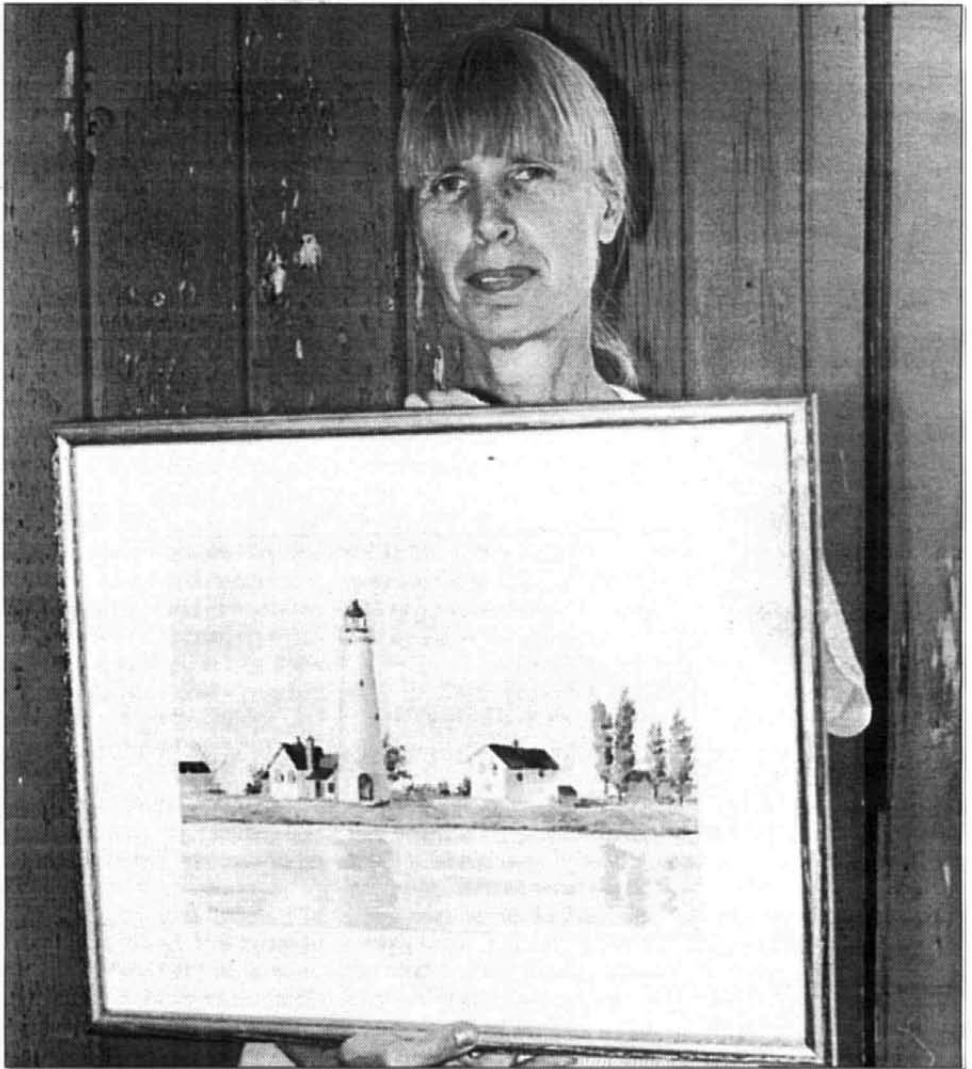
Held annually since at least 1926, the service is offered to bless and give thanks for those sailors and fishermen who risked their lives on the lakes for the good of those on shore, and to pay homage to those sailors and fishermen who have passed away in the past year.

This year's service is set for Sunday, Aug. 8, at 2 p.m. and features guest speaker Norm Ruttan, superintendent of St. Lawrence Islands National Park.

Other participants include organist Pat Calnan, Reverend Ted Goodier, museum chairman Robert Townsend, commercial fisherman Roxy Lancaster reading the roll of honour, and a scripture reading by OPP Constable Jennifer Tompkins, whose responsibilities include community policing in South Marysburgh Ward.

In order to raise funds for upgrades to the museum, tickets are currently being sold on an original painting donated by Betty Ann Anderson of The Owl in the Sun studio in Picton.

Ms. Anderson's watercolour depicts the old False Duck Island Lighthouse, which guided sailors from 1829 until it was decommissioned in



Gazette photo by Rick Fralick

Lighthouse rendering – Picton artist Betty Ann Anderson has donated this original watercolour of the old False Duck Island Lighthouse for the Mariners' Park Museum annual raffle. Tickets are \$2 each or three for \$5 and the draw will take place Oct. 11 at 5 p.m. at the museum.

1965 in favour of a modern lighthouse.

The painting shows the lighthouse as it appeared in its glory days, when it was mortared smooth and whitewashed.

The False Duck Island Lighthouse was re-erected at the head of South Bay by South Marysburgh and Athol Townships in 1966

as a centennial project. This version, which sits on the grounds of the Mariners' Park Museum, features bare fieldstones.

Interestingly, some of Ms. Anderson's ancestors were part of the fishing colony at Point Traverse and lived on False Duck Island at one point.

Tickets for the painting

are \$2 each or three for \$5 and the winning ticket will be drawn Oct. 11 at 5 p.m. at the museum.

The Mariners' Park Museum is open daily until Labour Day and then weekends only until Thanksgiving.

More information is available by calling 476-8392.