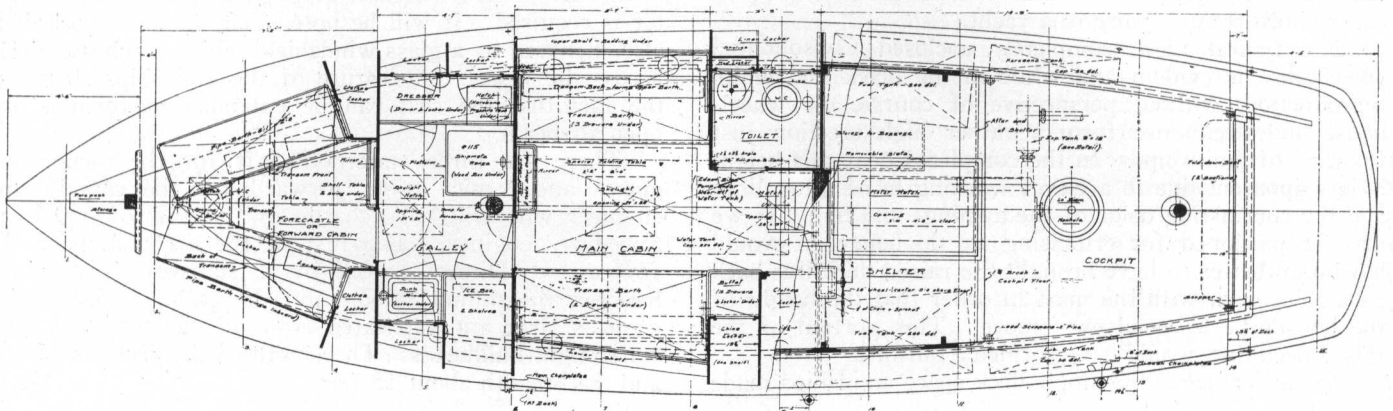


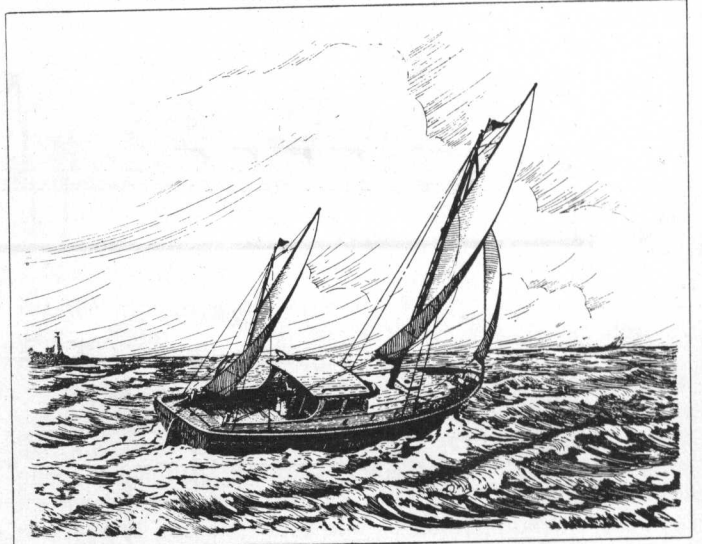
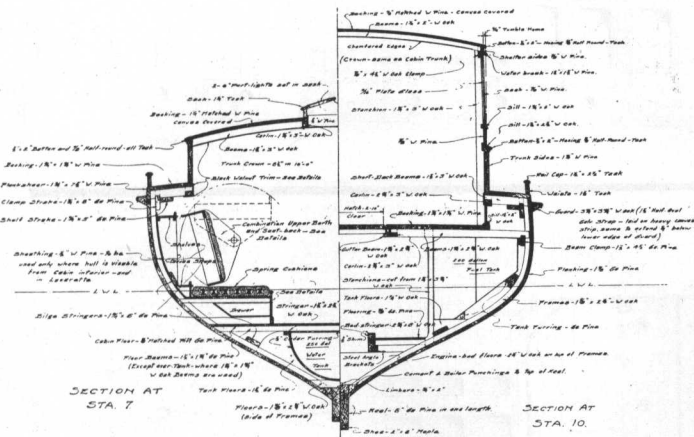
### A Fifty-fifty Cruiser

Water Witch, designed by Wm. H. Hand, Jr., is, in many ways, the most interesting craft we have been privileged to publish in many months. Plans from Hand's board are always good, but when he sits down to design a boat for his own use you can be prepared to see something out of the ordinary. He has designed and owned the schooners Andiamo, Whistler, Black Hawk, Blue Goose and Tigress and they have all gone down in his-

tory as fine vessels, but now he has turned to the combination power-sailing vessel which is not quite an auxiliary unless the term may be used to cover a power boat having enough sail to drive her along in the proper breezes. The hull design is according to sailing yacht practise in most respects with plenty of underwater body and ballast to keep her steady and comfortable in rough water.

Not only has Mr. Hand consented to our publishing these plans but he has given us a most complete set of them, all of which are reproduced upon these facing pages.





Note the able form of the underbody, the shipshape appearance of the profile and particularly the use of the good old gaff rig. The engine is a Sterling Chevron developing 100 h.p. and it is expected that she will shove along at 10 knots in spite of the ballast, the 400 gallons of gasoline and the 250 gallons of water.

Forward there is a large combination stateroom and forecabin with folding table, lockers and a toilet. Next aft comes a real galley with a Shipmate stove and all the other fixin's which go in a real ship. Next aft comes the main cabin finished in black walnut and cream enamel and containing four berths when the transom backs are lowered, locker space, radio set, folding table and, bulkheaded off, a toilet room. From this room we go up to the cockpit and find ourselves upon the sheltered bridge. What a comfort that will be when the seas are curling or the chill

winds sweep down upon the little vessel. This shelter contains all the controls, the chart table and binnacle and furthermore shields the main companion from stray buckets of dashing spray.

On the port side of the shelter we find, in dotted lines, the outline of the tender which looks very much like our own Lindy, plans of which are in this issue. As the designs of Water Witch were drawn before Lindy (the boat not the aviator) was ever thought of, we cannot accuse the eminent New Bedford architect with stealing our stuff. We would much rather flatter ourselves with the thought that he, also, thought the Lindy type was worth while.

Length overall	.....	46 feet 0 inches
Breadth	.....	13 " 0 "
Draught	.....	5 " 0 "

